



CONCRETE COMPRESSIVE STRENGTH TEST

PROJECT :
 SAMPLE FROM : WATERSTOP PRODUCT CO.,LTD.
 CONTRACTOR :

Req. No. 52-925
 Date of Request 15/9/2009
 Date of Submission 20/10/2009

Spec. No.	Code	Cross Sectional Area (cm ²)	Height of Specimen (cm)	Weight of Specimen (kg)	Slump of Concrete * (cm)	Date of Casting * (d/m/y)	Date of Testing (d/m/y)	Ages (days)	Ultimate Load (kg)	Comp. Strength (ksc)	Weight per Volume (kg/cu.m.)	Remark
1	Control	226.35	15.01	7.793	12.0	9-Sep-09	16-Sep-09	7	49,962	220.73	2,293.77	บ่มด้วยอากาศ
2	Control	227.10	14.95	7.843	12.0	9-Sep-09	16-Sep-09	7	50,579	222.71	2,310.02	บ่มด้วยอากาศ

Mix Cement : Sand : Aggregate = 1 : 2.17 : 3.26 , w/c = 0.65



* Data obtained from the request agency

TYPE OF SAMPLE : CYLINDER CUBE
 METHOD OF CAST : MANUAL

TESTED BY:

Mr.Sombat Natesawang



CERTIFIED BY:

ผศ.สมเกียรติ ขวัญพุกภัย

- Note: 1) CERTIFICATION APPLIES TO TEST SAMPLES ONLY.
 2) NO ERASURE OR ALTERATIONS.
 3) THERE ARE TWO TESTED SAMPLES FOR THIS DATA SHEET.



DEPARTMENT OF CIVIL ENGINEERING

FACULTY OF ENGINEERING, KING MONGKUT'S INSTITUTE OF TECHNOLOGY

LADKRABANG BANGKOK THAILAND. TEL. 0 - 2326 - 4216

CONCRETE COMPRESSIVE STRENGTH TEST

PROJECT :

Req. No. 52-925

SAMPLE FROM : WATERSTOP PRODUCT CO.,LTD.

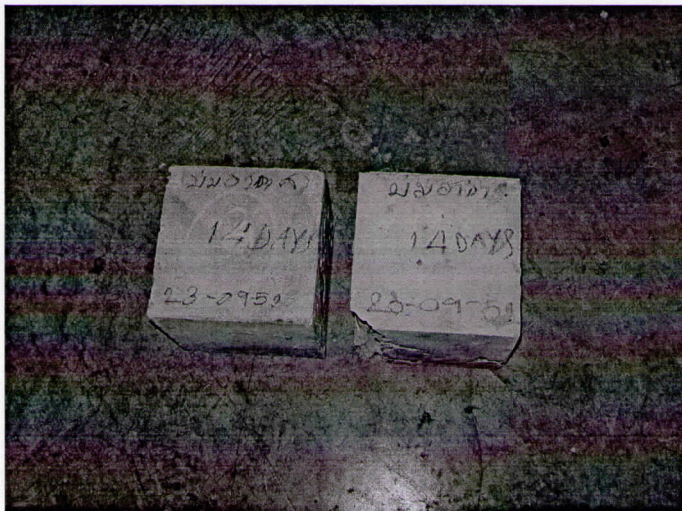
Date of Request 15/9/2009

CONTRACTOR :

Date of Submission 20/10/2009

Spec. No.	Code	Cross Sectional Area (cm ²)	Height of Specimen (cm)	Weight of Specimen (kg)	Slump of Concrete * (cm)	Date of Casting * (d/m/y)	Date of Testing (d/m/y)	Ages (days)	Ultimate Load (kg)	Comp. Strength (ksc)	Weight per Volume (kg/cu.m.)	Remark
1	Control	229.37	14.97	7.798	12.0	9-Sep-09	23-Sep-09	14	61,286	267.20	2,271.07	บ่มด้วยอากาศ
2	Control	227.85	15.00	7.779	12.0	9-Sep-09	23-Sep-09	14	66,228	290.67	2,276.08	บ่มด้วยอากาศ

Mix Cement : Sand : Aggregate = 1 : 2.17 : 3.26 , w/c = 0.65



* Data obtained from the request agency

TYPE OF SAMPLE : CYLINDER CUBE

TESTED BY:

METHOD OF CAST : MANUAL

Mr Sombat Natesawang

Note: 1) CERTIFICATION APPLIES TO TEST SAMPLES ONLY.

2) NO ERASURE OR ALTERATIONS.

CERTIFIED BY:

3) THERE ARE TWO TESTED SAMPLES FOR THIS DATA SHEET.

ผศ.สมเกียรติ ขวัญพุกภัย





CONCRETE COMPRESSIVE STRENGTH TEST

PROJECT :

Req. No. 52-925

SAMPLE FROM : WATERSTOP PRODUCT CO.,LTD.

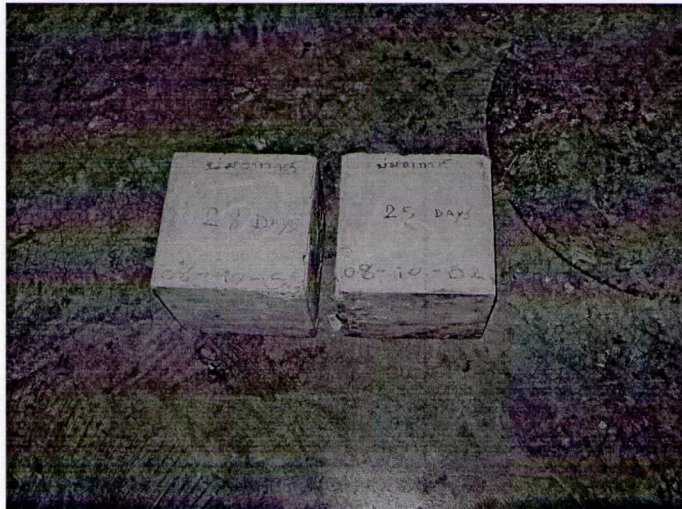
Date of Request 15/9/2009

CONTRACTOR :

Date of Submission 20/10/2009

Spec. No.	Code	Cross Sectional Area (cm ²)	Height of Specimen (cm)	Weight of Specimen (kg)	Slump of Concrete * (cm)	Date of Casting * (d/m/y)	Date of Testing (d/m/y)	Ages (days)	Ultimate Load (kg)	Comp. Strength (ksc)	Weight per Volume (kg/cu.m.)	Remark
1	Control	226.95	15.06	7.888	12.0	9-Sep-09	7-Oct-09	28	65,610	289.10	2,307.89	บ่มด้วยอากาศ
2	Control	228.76	14.97	7.879	12.0	9-Sep-09	7-Oct-09	28	70,140	306.61	2,300.72	บ่มด้วยอากาศ

Mix Cement : Sand : Aggregate = 1 : 2.17 : 3.26 , w/c = 0.65



* Data obtained from the request agency

TYPE OF SAMPLE : CYLINDER CUBE

TESTED BY

METHOD OF CAST : MANUAL

Mr. Sombat Natesawang

Note: 1) CERTIFICATION APPLIES TO TEST SAMPLES ONLY.

2) NO ERASURE OR ALTERATIONS.

3) THERE ARE TWO TESTED SAMPLES FOR THIS DATA SHEET.

CERTIFIED BY



พศ. สวมเกียรติ ขวัญพุกภัย



CONCRETE COMPRESSIVE STRENGTH TEST

PROJECT :
 SAMPLE FROM : WATERSTOP PRODUCT CO.,LTD.
 CONTRACTOR :

Req. No. 52-925
 Date of Request 15/9/2009
 Date of Submission 20/10/2009

Spec. No.	Code	Cross Sectional Area (cm ²)	Height of Specimen (cm)	Weight of Specimen (kg)	Slump of Concrete * (cm)	Date of Casting * (d/m/y)	Date of Testing (d/m/y)	Ages (days)	Ultimate Load (kg)	Comp. Strength (ksc)	Weight per Volume (kg/cu.m.)	Remark
1	Water Cure-E	227.09	15.04	7.827	12.0	9-Sep-09	16-Sep-09	7	50,579	222.72	2,291.61	บ่มด้วยอากาศ
2	Water Cure-E	226.95	14.94	7.842	12.0	9-Sep-09	16-Sep-09	7	54,080	238.29	2,312.82	บ่มด้วยอากาศ

Mix Cement : Sand : Aggregate = 1 : 2.17 : 3.26 , w/c = 0.65



* Data obtained from the request agency

TYPE OF SAMPLE : CYLINDER CUBE
 METHOD OF CAST : MANUAL

TESTED BY

Mr. Sombat Natesawang

CERTIFIED BY

ผศ.สมเกียรติ ขวัญพุกภัย

Note: 1) CERTIFICATION APPLIES TO TEST SAMPLES ONLY.

2) NO ERASURE OR ALTERATIONS.

3) THERE ARE TWO TESTED SAMPLES FOR THIS DATA SHEET.



CONCRETE COMPRESSIVE STRENGTH TEST

PROJECT :
 SAMPLE FROM : WATERSTOP PRODUCT CO.,LTD.
 CONTRACTOR :

Req. No. 52-925
 Date of Request 15/9/2009
 Date of Submission 20/10/2009

Spec. No.	Code	Cross Sectional Area (cm ²)	Height of Specimen (cm)	Weight of Specimen (kg)	Slump of Concrete * (cm)	Date of Casting * (d/m/y)	Date of Testing (d/m/y)	Ages (days)	Ultimate Load (kg)	Comp. Strength (ksc)	Weight per Volume (kg/cu.m.)	Remark
1	Water Cure-E	228.30	14.94	7.733	12.0	9-Sep-09	23-Sep-09	14	70,346	308.13	2,267.21	บ่มด้วยอากาศ
2	Water Cure-E	227.55	14.99	7.916	12.0	9-Sep-09	23-Sep-09	14	73,434	322.71	2,320.70	บ่มด้วยอากาศ

Mix Cement : Sand : Aggregate = 1 : 2.17 : 3.26 , w/c = 0.65



* Data obtained from the request agency

TYPE OF SAMPLE : CYLINDER CUBE

METHOD OF CAST : MANUAL

TESTED BY

Mr.Sombat Natesawang



CERTIFIED BY

Note: 1) CERTIFICATION APPLIES TO TEST SAMPLES ONLY.

2) NO ERASURE OR ALTERATIONS.

3) THERE ARE TWO TESTED SAMPLES FOR THIS DATA SHEET.

ผศ.สมเกียรติ ขวัญพุกภัย



CONCRETE COMPRESSIVE STRENGTH TEST

PROJECT :

Req. No. 52-925

SAMPLE FROM : WATERSTOP PRODUCT CO.,LTD.

Date of Request 15/9/2009

CONTRACTOR :

Date of Submission 20/10/2009

Spec. No.	Code	Cross Sectional Area (cm ²)	Height of Specimen (cm)	Weight of Specimen (kg)	Slump of Concrete * (cm)	Date of Casting * (d/m/y)	Date of Testing (d/m/y)	Ages (days)	Ultimate Load (kg)	Comp. Strength (ksc)	Weight per Volume (kg/cu.m.)	Remark
1	Water Cure-E	225.90	15.03	7.772	12.0	9-Sep-09	7-Oct-09	28	75,905	336.01	2,289.08	บ่มด้วยอากาศ
2	Water Cure-E	226.50	15.02	7.811	12.0	9-Sep-09	7-Oct-09	28	77,346	341.48	2,295.96	บ่มด้วยอากาศ

Mix Cement : Sand : Aggregate = 1 : 2.17 : 3.26 , w/c = 0.65



* Data obtained from the request agency

TYPE OF SAMPLE : CYLINDER CUBE

METHOD OF CAST : MANUAL



TESTED BY:

Mr.Sombat Natesawang

CERTIFIED BY:

Note: 1) CERTIFICATION APPLIES TO TEST SAMPLES ONLY

2) NO ERASURE OR ALTERATIONS.

3) THERE ARE TWO TESTED SAMPLES FOR THIS DATA SHEET.

ผศ.สมเกียรติ ขวัญพุกภัย